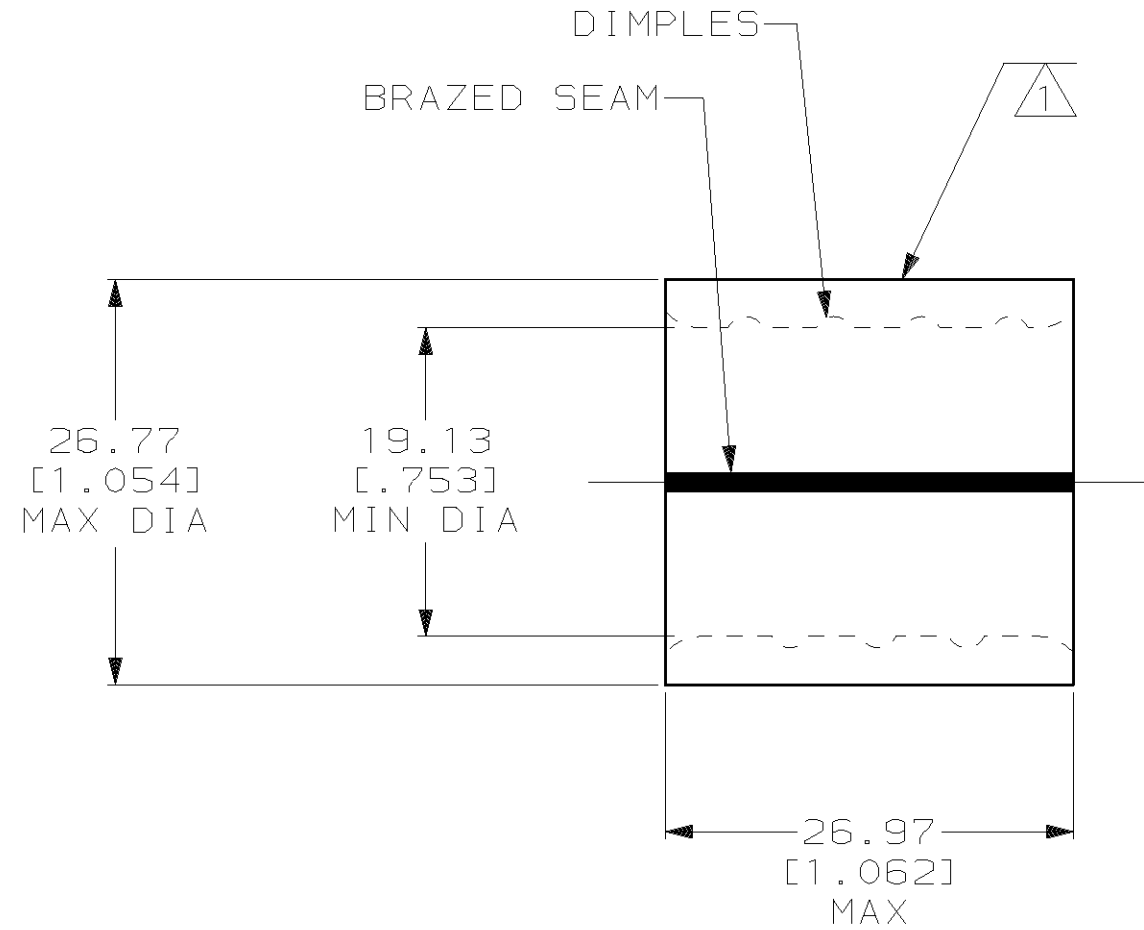


THIS DRAWING IS UNPUBLISHED. RELEASED FOR PUBLICATION, 19 .  
 © COPYRIGHT 19 BY AMP INCORPORATED. ALL INTERNATIONAL RIGHTS RESERVED.

| LOC | DIST | P | F | ZONE | LTR | DESCRIPTION          | DATE    | APPD |
|-----|------|---|---|------|-----|----------------------|---------|------|
| G   | 14   |   |   |      | C   | REV PER 063A-0435-02 | 30SEP02 | MS   |



|                          |                           |
|--------------------------|---------------------------|
| <b>AMP</b><br>WIRE RANGE | E13288<br>Listed          |
| 250 MCM<br>STRANDED      | 250 MCM<br>STRANDED       |
| LR7189<br>Certified      | MILITARY P/N<br>AND CLASS |
| 250 MCM<br>STRANDED      | NOT<br>APPLICABLE         |

- 1 STAMP AMP W\* 250-300 MCM  
LOCATE APPROX AS SHOWN
- 2 MATERIAL THK: 3.20<sup>±0.10</sup> [.126<sup>±.004</sup>]
- 3 STAMP FOR MANUFACTURING LOCATION OR  
CODE PERMISSIBLE.

**AMP INCORPORATED  
CUSTOMER SERVICE SYSTEMS**

|   |  |
|---|--|
| FOR ADDITIONAL<br>PRODUCT INFORMATION OR<br>COPIES OF DRAWINGS<br>AND TECHNICAL DOCUMENTS | PRODUCT INFORMATION CENTER<br>1-800-522-6752 |
| FOR APPLICATION<br>TOOLING INFORMATION  | TOOLING ASSISTANCE CENTER<br>1-800-722-1111  |
| FOR ORDER ENTRY   | 1-800-526-5142                               |

|  |
|--|
| MAX RECOMMENDED OPERATING<br>TEMPERATURE:<br><br>170°C MAX   |
| VOLTAGE RATING:<br><br>NOT APPLICABLE  |
| CIRCULAR MIL AREA:<br>117.1-152.0mm <sup>2</sup> [231-300] MCM<br>STRANDED   |
| THIS DRAWING IS A CONTROLLED DOCUMENT FOR<br>AMP INCORPORATED. IT IS SUBJECT TO CHANGE<br>AND THE CONTROLLING ENGINEERING ORGANIZATION<br>SHOULD BE CONTACTED FOR THE LATEST REVISION. |

|   |
|---|
| DO NOT SCALE PRINT.<br>UNLESS SPECIFIED<br>DIMENSIONS IN mm [INCHES]<br>TOLERANCES ON:<br>2 PLC DEC ± 0.20[.008]<br>3 PLC DEC ± -<br>ANGLES ± - |
| MATERIAL<br>COPPER PER ASTM B-152<br>ANNEALED   |
| FINISH<br>TIN PLATE<br>0.00254[.000100] MIN<br>THK PER MIL-T-10727  |

|                           |
|---------------------------|
| DR 5/6/93<br>DK SCHRUM    |
| CHK 5/14/93<br>AJ KAUFMAN |
| APPD 5/14/93<br>RE ROSER  |
| APPD 5/14/93<br>CR RHOADS |
| PRODUCT SPEC<br>-         |
| APPLICATION SPEC<br>-     |
| WEIGHT -                  |

|   |                    |                        |
|---|--------------------|------------------------|
| AMP Incorporated<br>Harrisburg, PA 17105-3608                   |                    |                        |
| NAME<br>SPLICE, PARALLEL, SOLISTRAND,<br>WIRE SIZE: 250-300 MCM |                    |                        |
| SIZE<br>B   | CAGE CODE<br>00779 | DRAWING NO<br>C-322275 |
| SCALE<br>2:1  | SHEET<br>1 OF 1    |                        |

322275  
PART NO